

# **Anderson Seeds**

**Of St. Peter, MN**

## **2026 Seed Guide**





## QUALITY SEED CORN GROWN RIGHT IN YOUR BACK YARD!

We are proud to offer our customers corn and soybean seed grown for Minnesota, and as much as possible is grown in Minnesota. Our family strives to produce the highest quality seed by selecting lines that meet the needs of our customers and by eliminating the middleman. We hope to take some stress out of the decision making process by allowing you to deal directly with the source. All of our customers are important to us whether they purchase 1 or 100 bags of seed, whether they order ahead of time or show up on the dock in the spring. We do our best to price our seed accordingly to allow for the best price at all times.

The last couple years have brought us all challenges and many changes. One of these challenges/changes we have seen is price increases across the board on everything; things we need to survive and things we need to produce a crop. Again this year, we've spent a lot of time crunching numbers to still give our customers the best price we could while still covering the costs we have in order to produce and sell you the seed we do. As we look ahead to the next growing season, we plan to continue to provide quality seed selected for our area. We are working diligently to research and select new hybrids to replace numbers that have excelled in our lineup.

If you would like to place an order please feel free to give us a call, we would love to visit with you! Thank you for choosing to purchase seed from us and best wishes towards successful farming, now and in the future!

*Thank You!*



## ORDERING & SEED PICKUP

We can work with you to prepare and lock in your order as soon as you are ready. Orders will be accepted in person or over the phone. We can work with you to do that before the end of the year or any time up to the day of planting. We do our best to keep our prices fair for everyone and not bring the calendar or quantity into the decision making process. That being said, we do place orders on a first come first serve basis, so please keep that in mind.

We have the capabilities to do bulk seed. Bulk Seed Corn needs to be ordered as soon as possible because we prefer to do that as we process the seed corn so that we can save bags. Call 507-246-5032 if this is something you would be considering. Bulk soybeans can be ordered at anytime with 24 hours prior notice to pickup.

We prefer preorders on bulk soybeans but can work with you in season as well. Bulk comes as 40 units unless otherwise discussed. Bulk Seed sent off the farm in a Probox will be invoiced \$750 per box if not returned by June 15th. We ask that they are returned as soon as they are empty, no later than June 15th.

Treated soybeans must be ordered by MARCH 1st. Treated soybeans must be paid for prior to treating. Treated soybeans are NON-RETURNABLE, please figure accordingly. **Call for treating options.**

When it is time to pickup seed in the spring we will send out a post card to those that have ordered to let them know when we are ready to start moving seed, usually early April depending on Mother Nature. *We do not deliver seed, you are expected to lineup your own shipping or pick it up yourself.* Seed must be paid for upon pickup, prepay is welcome.

## RETURN POLICY

We will accept returns of seed corn and soybeans up until **JUNE 15th.** Seed returns accepted after **JUNE 15th** will be charged a restocking fee of \$20/unit. ***No Seed returns will be accepted after July 1st.*** We will NOT accept returns of opened, wet, dirty, unsaleable or damaged bags of seed. We will NOT accept returns of treated soybeans. Proboxes must be returned by **June 15th**, or customer will be charged \$750 per box.



# Conventional Corn Offerings

8690	
Maturity: 90 Day CRM	
Trait: Conventional	
Stalk Strength	VG
Root Strength	VG
Dry Down	VG
Seedling Vigor	VG
<ul style="list-style-type: none"> <li>&gt; Very adaptable in and out of zone</li> <li>&gt; Semi-Flex ear that likes high populations</li> <li>&gt; Healthy hybrid with a strong disease package</li> <li>&gt; Potential dual purpose hybrid</li> <li>&gt; Very good stalks and roots</li> </ul>	



7422	
Maturity: 92 Day CRM	
Trait: Conventional	
Stalk Strength	VG
Root Strength	VG
Dry Down	G
Seedling Vigor	VG
<ul style="list-style-type: none"> <li>&gt; Tremendous yield performance</li> <li>&gt; Very good early season vigor</li> <li>&gt; Exceptional consistent ear development</li> <li>&gt; Widely adapted across many soil types</li> <li>&gt; Dual purpose silage option</li> </ul>	

7995	
Maturity: 95 Day CRM	
Trait: Conventional	
Stalk Strength	VG
Root Strength	VG
Dry Down	VG
Seedling Vigor	G
<ul style="list-style-type: none"> <li>&gt; Exciting yield potential</li> <li>&gt; Good overall plant health with Goss's tolerance</li> <li>&gt; Very good drought tolerance</li> <li>&gt; Performs best at med-high populations</li> <li>&gt; Great variety for Minnesota</li> </ul>	

7865	
Maturity: 95 Day CRM	
Trait: Conventional	
Stalk Strength	VG
Root Strength	E
Dry Down	VG
Seedling Vigor	E
<ul style="list-style-type: none"> <li>&gt; Excellent anthracnose stalk rot tolerance</li> <li>&gt; Potential to out yield 7995</li> <li>&gt; Very good late season intactness</li> <li>&gt; Good on Goss's Wilt</li> <li>&gt; Adaptable to many management types</li> </ul>	

Brand	Relative Maturity	Trait	GDUs to Black Layer	Population Tolerance	Seedling Vigor	Root Strength	Stalk Strength	Stay Green	Drought Tolerance	Plant Height	Ear Type
8690	90	Conv	2250	32-36	VG	VG	VG	G	VG	3	3
7422	92	Conv	2260	28-36	VG	VG	VG	G	VG	2	3
7995	95	Conv	2350	30-36	G	VG	VG	G	VG	3	1
7865	95	Conv	2360	30-36	E	E	VG	G	VG	3	3
6398	98	Conv	2400	30-36	VG	VG	G	G	G	2	3
4501	100	Conv	2389	30-36	G	VG	VG	G	VG	3	2
5072	102	Conv	2417	32-36	VG	VG	G	G	G	2	2
4505	104	Conv	2550	28-36	VG	G	VG	VG	VG	3	3

New= New variety available for 2026

Retiring= 2026 will be the last year in the lineup, quantities are limited

Plant Height: 1= Tall, 2= Med Tall, 3= Medium, 4= Med. Short, 5= Short

Conv= Conventional Corn



6398

Maturity: 98 Day CRM

Trait: Conventional

Stalk Strength	G
Root Strength	VG
Dry Down	G
Seedling Vigor	VG

- > Excellent top end yield potential
- > Very good seedling vigor
- > Nice flex style ear
- > Very adaptable to varying environments
- > Very good Goss' tolerance

4501

Maturity: 100 Day CRM

Trait: Conventional

Stalk Strength	VG
Root Strength	VG
Dry Down	G
Seedling Vigor	VG

- > Excellent seedling vigor
- > Healthy plant, VG Stalk & Root
- > Superior disease package
- > Best tar spot option in our catalog
- > Excels in med-high yield environments

5072

Maturity: 102 Day CRM

Trait: Conventional

Stalk Strength	G
Root Strength	VG
Dry Down	G
Seedling Vigor	VG

- > Strong yield potential
- > Adaptive variety, performs well in zone
- > Very good stalk and root system
- > Semi- Flex ear with very good test weight
- > Very good Goss' Tolerance

4505

Maturity: 104 Day CRM

Trait: Conventional



Stalk Strength	VG
Root Strength	G
Dry Down	G
Seedling Vigor	VG

- > Versatile hybrid on all environments
- > Consistent performer
- > Strong disease package
- > Dual purpose option
- > Replaces 5904

Test Weight	Dry Down	Corn-On-Corn	Goss's Wilt	Northern Corn Leaf Blight	Anthraco se Stalk Rot	Tar Spot	Silage Appeal	No-Till Tolerance	Lineup Notes	Brand
VG	VG	G**	VG	VG	G	G	VG	G	NEW	8690
G	G	VG**	G	VG	n/a	n/a	VG	G		7422
VG	G	G**	G	G	G	n/a	n/a	n/a		7995
VG	VG	F**	G	G	E	G	n/a	VG		7865
G	G	VG**	VG	G	n/a	F	G	n/a		6398
VG	VG	G**	VG	G	VG	VG	n/a	G		4501
VG	G	F**	VG	G	G	F	G	VG		5072
G	G	VG**	VG	VG	n/a	G-VG	VG	G	NEW	4505

E= Excellent

VG= Very Good

G= Good

F= Fair

n/a= information not available

\*\* Corn on Corn acceptable with Fungicide

Ear Type: 1= Fixed, 2= Semi Determinate, 3= Semi- Flex, 4= Flex





## 742R

Maturity: 92 Day CRM

Trait: Roundup Ready® Corn 2

Stalk Strength VG

Root Strength VG

Dry Down G

Corn on Corn G

- > Strong performance across varying soil types
- > Very Good stalks and roots
- > Adaptive to many environments
- > Outstanding yield performance
- > Very Good Early Corn Variety

## 786R

Maturity: 95 Day CRM

Trait: Roundup Ready® Corn 2

Stalk Strength VG

Root Strength E

Dry Down VG

Corn on Corn F

- > Strong late season standability
- > Very good drought tolerance
- > Very high tolerance to anthracnose stalk rot
- > Good on Goss's Wilt
- > Very Good emergence, good for reduced tillage acres

## 609R

Maturity: 98 Day CRM

Trait: Roundup Ready® Corn 2

Stalk Strength VG

Root Strength VG

Dry Down VG

Corn on Corn VG

- > Outstanding Goss's Wilt tolerance
- > Very good stalk and root strength
- > Great dual purpose silage option
- > Very good late season intactness
- > Very good performance across many environments

## 611R

Maturity: 100 Day CRM

Trait: Roundup Ready® Corn 2

Stalk Strength VG

Root Strength VG

Dry Down G

Corn on Corn VG

- > Very good stress tolerance
- > Very good Goss's Wilt tolerance
- > Strong agronomics with yield potential
- > Very good root and stalk package
- > Roundup Ready® version of 6811

## 507R

Maturity: 102 Day CRM

Trait: Roundup Ready® Corn 2

Stalk Strength VG

Root Strength VG

Dry Down G

Corn on Corn G

- > Excellent yield potential across environments
- > Very good agronomics, including strong stalks and roots
- > Medium-tall plant with excellent plant health
- > Strong adaptation in zone and north



# Trecepta®

## RIB COMPLETE®

Above Ground Traits

### 728TRE

Maturity: 98 Day CRM

Trait: Trecepta® RIB Complete®

Stalk Strength	VG
Root Strength	VG
Dry Down	VG
Corn on Corn	VG

- > Strong agronomic package
- > Excellent ear flex with nice girthy ears
- > Flowers late but makes it up in dry down
- > Very adaptable variety with very good potential
- > This is a 5% refuge in the bag product (RIB)

### 528TRE

Maturity: 102 Day CRM

Trait: Trecepta® RIB Complete®

Stalk Strength	VG
Root Strength	VG
Dry Down	VG
Corn on Corn	F

- > Very tolerant of variable yield environments
- > Very good drought tolerance
- > Very good Dry Down
- > Very good fall appearance and health
- > This is a 5% refuge in the bag product (RIB)

## What is Tar Spot and How Does it Impact Corn?

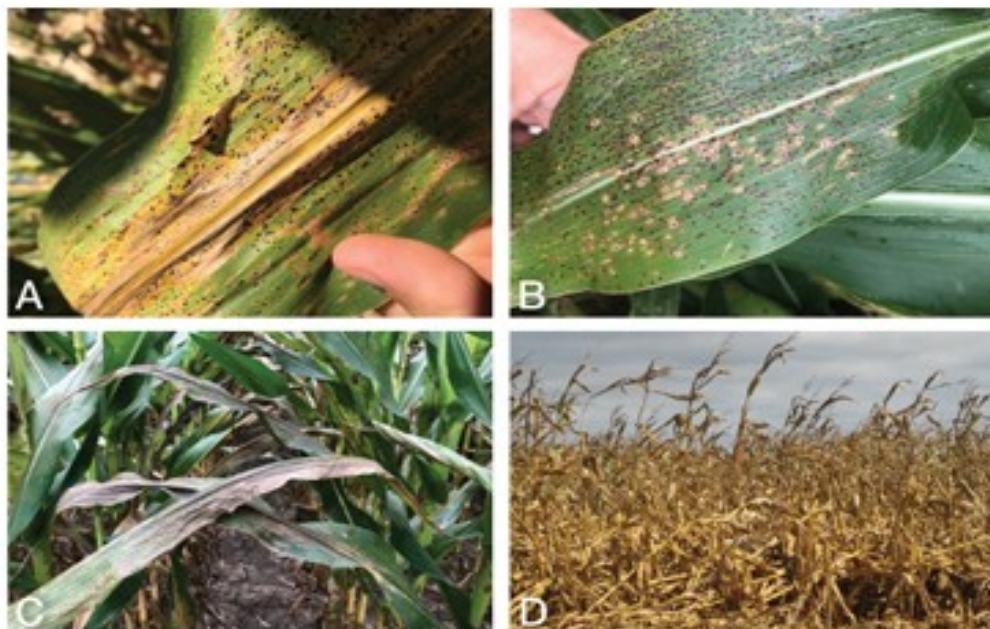


Figure 2. Tar spot is a fungal disease that appears as a series of black spots containing spores on corn leaves (A and B). Depending on the date of infection, the spores may proliferate on the plant's leaves and cause reduced photosynthesis (C), which can lead to stalk cannibalization and poor standability (D).



# STRONGER YIELDS SMARTER WEED CONTROL

Advanced trait technology for exceptional weed and above-ground pest control.

## Product overview

- Exceptional broad-spectrum protection against above-ground pests
- Stacked with the Enlist® corn trait for multiple sites of action against tough weeds

## Benefits

- Insect control against black cutworm, fall armyworm, European and southwestern corn borers
- Provides an additional mode of action (MOA) for European corn borer over VT Double PRO and Trecepta corn
- Enlist® weed control system provides a whole farm, neighbor-friendly solution across corn, soybean and cotton acres

## Refuge requirements

### POWERCORE ENLIST TRAIT

- **Corn Region:** 5% separate, structured refuge
- **Cotton Region:** 20% separate, structured refuge

### POWERCORE® ENLIST® REFUGE ADVANCED® TRAIT

- **Corn Region:** 5% integrated refuge included in the bag
- **Cotton Region:** 20% additional separate, structured refuge



## How does PowerCore® Enlist® trait technology stack up?

	PowerCore® Enlist® corn	VT Double PRO corn	Trecepta
Above ground insect control	above B.t. trait MON89034 (Cry1A.105)	above B.t. trait MON89034 (Cry1A.105)	above B.t. trait MON89034 (Cry1A.105)
	above B.t. trait MON89034 (Cry2Ab)	above B.t. trait MON89034 (Cry2Ab)	above B.t. trait MON89034 (Cry2Ab)
	above B.t. trait TC1507 (Cry1F)		above B.t. trait MIR162 (Vip3Aa)
Herbicide tolerance	Glyphosate (NK603)	Glyphosate (NK603)	Glyphosate (NK603)
	Glufosinate (pat)		
	Enlist 2,4-D (DAS40278)		
	FOPs (DAS40278)		



\*\* Trademarks of Corteva Agriscience and its affiliated companies.  
POWERCORE® is a registered trademark of Bayer Group. POWERCORE® multi-event technology developed by Corteva Agriscience and Monsanto. LibertyLink® and the Water Droplet Design are registered trademarks of BASF. ®Roundup, Roundup Ready, Genuity VT Double PRO® and Trecepta® are registered trademarks of Bayer Group. Always follow IRM, grain marketing and all other stewardship practices and pesticide label directions. B.t. products may not yet be registered in all states. Check with your seed representative for the registration status in your state. Enlist One® and Enlist Duo® are not labeled for use in all 50 states. To find product labels, state registration status, and additional resources about the Enlist® weed control system and its availability, visit [Enlist.com](http://Enlist.com). Additional stewardship information on Enlist crops and to review seed product use guide details, visit [traitstewardship.com](http://traitstewardship.com). © 2025 Corteva. 030800 LC (06/25)



## 4595PCE

Maturity: 95 Day CRM

Trait: PowerCore® Enlist® Refuge Advanced®

Stalk Strength	VG
Root Strength	VG
Dry Down	G
Corn on Corn	G

- > Adaptive hybrid with strong disease tolerance
- > Silage option
- > Very good late season intactness
- > Exciting performance potential
- > This product has refuge in the bag

## 4501PCE

Maturity: 100 Day CRM

Trait: PowerCore® Enlist® Refuge Advanced®

Stalk Strength	VG
Root Strength	VG
Dry Down	G
Corn on Corn	VG

- > Semi fixed, consistent ear
- > Responds well to high populations
- > Best tar spot option in the catalog
- > Strong agronomic package
- > This product has refuge in the bag

## 4505PCE

Maturity: 104 Day CRM

Trait: PowerCore® Enlist® Refuge Advanced®

Stalk Strength	VG
Root Strength	G
Dry Down	G
Corn on Corn	VG

- > Very adaptable hybrid
- > Strong disease package
- > Very nice fall appearance
- > Silage Option
- > Replacement for 504R



### THE NEW STANDARD FOR WEED CONTROL & YIELD PERFORMANCE ENLIST® WEED CONTROL SYSTEM



ON-TARGET APPLICATIONS: | 90% less drift than traditional 2,4-D | 96% less volatile than 2,4-D ester



Enlist Duo® and Enlist One® herbicides with Colex-D® technology are the only herbicides containing 2,4-D that are labeled for preemergence and postemergence use on PowerCore® Enlist® corn.

| 2,4-D choline | Glyphosate | Glufosinate | FOP Herbicides

- Convenient proprietary blend of 2,4-D choline and glyphosate
- The two modes of action work together to deliver control of yield-robbing weeds and help prevent resistance
- Straight goods 2,4-D choline with additional tank-mix flexibility
- Provides additional tank-mix flexibility with glyphosate, glufosinate and other qualified tank-mix products, allowing for a customized weed control program to fit each farm





## 746SRC

Maturity: 98 Day CRM

Trait: SmartStax® RIB Complete® Corn Blend

Stalk Strength	VG
Root Strength	VG
Dry Down	VG
Corn on Corn	VG

- > Strong agronomic package & high yield potential
- > Semi Flex Ear prefers med-high populations
- > Great fall appearance
- > Fits many yield environments
- > This is a 5% refuge in the bag product (RIB)

## 681SRC

Maturity: 100 Day CRM

Trait: SmartStax® RIB Complete® Corn Blend

Stalk Strength	VG
Root Strength	VG
Dry Down	G
Corn on Corn	VG

- > Broadly adapted across environments
- > Very good stalk and root strength
- > Strong tolerance to Anthracnose stalk rot
- > This is a 5% refuge in the bag product (RIB)
- > Stacked of 681VT2P

## 507SRC

Maturity: 102 Day CRM

Trait: SmartStax® RIB Complete® Corn Blend

Stalk Strength	VG
Root Strength	VG
Dry Down	G
Corn on Corn	G

- > Very strong yield potential
- > Outstanding agronomics and plant health
- > Broad adaptability across environments
- > This is a 5% refuge in the bag product (RIB)
- > Stacked of 507R

## 454SRC

Maturity: 105 Day CRM

Trait: SmartStax® RIB Complete® Corn Blend

Stalk Strength	VG
Root Strength	G
Dry Down	VG
Corn on Corn	VG

- > Works well in all yield environments
- > Tolerates disease pressure
- > Longer ears with very good tip fill
- > This is a 5% refuge in the bag product (RIB)
- > Replaces 472SRC



# SmartStax<sup>®</sup> PRO

## RIB COMPLETE<sup>®</sup>

Above & Below Ground Traits

### 747SSP

Maturity: 98 Day CRM

Trait: SmartStax<sup>®</sup> PRO RIB Complete<sup>®</sup>

Stalk Strength VG

Root Strength VG

Dry Down G

Corn on Corn VG

NEW!

- > Very adaptable hybrid
- > Excellent yield potential
- > Very good stalks and roots
- > Very good corn on corn option
- > Replaces and out yields 746SRC

### 624SSP

Maturity: 101 Day CRM

Trait: SmartStax<sup>®</sup> PRO RIB Complete<sup>®</sup>

Stalk Strength VG

Root Strength VG

Dry Down G

Corn on Corn VG

- > Lots of top end yield potential
- > Very nice agronomic package
- > Dual purpose hybrid potential
- > Healthy with VG stalk & root
- > 3 modes of action for corn rootworm control

## CORN TRAITS GUIDANCE TOOL



### DO YOU KNOW WHAT TRAIT IS RECOMMENDED FOR YOUR FIELDS?

- SmartStax<sup>®</sup> PRO with RNAi Technology is recommended for moderate to high corn rootworm (CRW) pressure environments including corn on corn operations.
- VT4PRO<sup>™</sup> with RNAi Technology and SmartStax<sup>®</sup> Technology are recommended for low to moderate corn rootworm pressure environments and areas at risk for extended diapause northern corn rootworm and areas with the western corn rootworm variant that lay eggs in soybean fields.
- For more in-depth guidance on trait recommendations for your operation, please see below.

How many years have you planted corn on corn?	Did you witness any corn rootworm damage in your corn crop last year?	What is your concern about corn rootworm in your fields?	Trecepta <sup>®</sup> TECHNOLOGY VT Double PRO <sup>™</sup> TECHNOLOGY	VT4PRO <sup>™</sup> TECHNOLOGY SmartStax <sup>®</sup> TECHNOLOGY	SmartStax <sup>®</sup> PRO TECHNOLOGY	Crop Rotation
0*	No	Low or Moderate	Primary Recommendation	Secondary Recommendation		
0*	No	High		Primary Recommendation		
1-4	Yes	Low, Moderate or High		Secondary Recommendation	Primary Recommendation	
1-4	No	High		Primary Recommendation	Secondary Recommendation	
1-4	No	Low or Moderate		Primary Recommendation	Secondary Recommendation	
5+	Yes	Low, Moderate or High			Secondary Recommendation	Primary Recommendation
5+	No	Low or Moderate		Secondary Recommendation	Primary Recommendation	
5+	No	High			Secondary Recommendation	Primary Recommendation

Recommendations above may not fit every scenario and may be impacted by environmental factors and other management practices. Reach out to your local agronomic expert for further recommendations.

■ = Primary Recommendation  
■ = Secondary Recommendation

\* Includes areas with CRW extended diapause or western CRW soybean variant.

- Price, germplasm, agronomic fit, and availability will help guide the VT4PRO<sup>™</sup> Technology vs. SmartStax<sup>®</sup> Technology decision.
- Expected level of pressure from western bean cutworm, corn earworm, and corn rootworm will help guide the VT Double PRO<sup>™</sup> Technology vs Trecepta<sup>®</sup> Technology vs VT4PRO<sup>™</sup> Technology decision.

Anderson Seeds • 507-246-5032

# Traited Corn Comparison Chart

Brand	Relative Maturity	Trait	GDU's to Black Layer	Population Tolerance	Seedling Vigor	Root Strength	Stalk Strength	Stay Green	Drought Tolerance	Plant Height
<b>742R</b>	92	RR2	2260	28-36	VG	VG	VG	G	VG	2
<b>786R</b>	95	RR2	2360	30-36	E	E	VG	G	VG	3
<b>609R</b>	98	RR2	2370	30-36	G	VG	VG	VG	VG	2
<b>611R</b>	100	RR2	2389	32-36	G	E	VG	G	VG	3
<b>507R</b>	102	RR2	2460	30-36	G	VG	VG	VG	G	2
<b>728TRE</b>	98	TRE	2450	28-36	VG	VG	VG	VG	VG	2
<b>528TRE</b>	102	TRE	2420	30-36	G	VG	VG	VG	VG	3
<b>4595PCE</b>	95	PCE	2395	28-36	VG	VG	VG	VG	VG	1
<b>4501PCE</b>	100	PCE	2450	30-36	VG	VG	G	VG	G	2
<b>4505PCE</b>	104	PCE	2570	28-36	VG	G	VG	G	VG	3
<b>746SRC</b>	98	SSRIB	2400	30-36	VG	VG	VG	VG	VG	2
<b>681SRC</b>	100	SSRIB	2390	28-36	G	VG	VG	G	G	2
<b>507SRC</b>	102	SSRIB	2480	30-36	G	VG	VG	VG	G	2
<b>454SRC</b>	105	SSRIB	2605	28-36	VG	G	VG	F	VG	2
<b>747SSP</b>	98	SSP	2400	28-36	VG	VG	VG	G	G	3
<b>624SSP</b>	101	SSP	2427	28-34	VG	VG	VG	G	G	3
<p>New= New variety available for 2026                      RIB= Refuge in the Bag</p> <p>Retiring= 2026 will be the last year in the lineup, quantities are limited</p> <p>Plant Height: 1= Tall, 2= Med Tall, 3= Medium, 4= Med. Short, 5= Short</p> <p>RR2= Roundup Ready ® Corn 2                      TRE= Trecepta® RIB Complete®</p> <p>PCE= PowerCore® Enlist® Refuge Advanced®</p>										



# Traited Corn Comparison Chart

Ear Type	Test Weight	Dry Down	Corn- On- Corn	Goss's Wilt	Northern Corn Leaf Blight	Anthraxnose Stalk Rot	Tar Spot	Silage Appeal	Refuge Requirement	Lineup Notes	Brand
3	G	G	VG	G	VG	n/a	n/a	VG	None		742R
3	VG	VG	F	G	G	E	G	n/a	None		786R
3	G	VG	G	E	G	n/a	n/a	VG	None		609R
2	G	G	G**	VG	G	VG	n/a	n/a	None	Retiring	611R
3	G	G	G	VG	G	G	G	n/a	None		507R
4	G	VG	VG	VG	G	VG	F	E	RIB	Retiring	728TRE
2	G	VG	F	G	G	VG	n/a	VG	RIB	Retiring	528TRE
3	VG	G	F	VG	VG	VG	G	VG	RIB		4595PCE
3	G	G	VG	VG	Vg	n/a	VG	VG	RIB		4501PCE
3	G	G	VG	VG	VG	n/a	G	VG	RIB		4505PCE
3	VG	VG	VG	VG	VG	VG	F	E	RIB		746SRC
3	G	G	VG	G	VG	n/a	n/a	E	RIB		681SRC
3	G	G	G**	VG	G	G	G	n/a	RIB		507SRC
3	G	VG	VG	VG	F	VG	F	VG	RIB		454SRC
3	G	G	VG	G	VG	VG	F	G	RIB	NEW	747SSP
3	G	G	VG	G	F	E	F	VG	RIB		624SSP

E= Excellent

VG= Very Good

G= Good

F= Fair

n/a= information not available

\*\* Corn on Corn acceptable with Fungicide

Ear Type: 1= Fixed, 2= Semi Determinate, 3= Semi- Flex, 4= Flex

SSRIB= SmartStax® RIB Complete®

SSP= SmartStax® PRO RIB Complete®

**A154E3**

Maturity: 1.5 RM

Trait: Enlist E3® Soybean Technology

Iron Chlorosis (IDC)	VG
SDS Tolerance	G
White Mold	G
Stress Tolerance	VG

- > Fits a high yield environment
- > Upgrade to our old A151E3
- > Peking for SCN
- > Total package kind of bean
- > Resistant to brown stem rot and stem canker

**A174E3**

Maturity: 1.7 RM

Trait: Enlist E3® Soybean Technology

IDC	G
SDS Tolerance	VG
White Mold	G
Stress Tolerance	G

- > Strong disease package
- > Very good emergence
- > High yield potential
- > Clean looking bean
- > Resistant to brown stem rot & stem canker

**A184E3**

Maturity: 1.8 RM

Trait: Enlist E3® Soybean Technology

Iron Chlorosis (IDC)	VG
SDS Tolerance	VG
White Mold	VG
Stress Tolerance	VG

- > Very good standability
- > Strong IDC tolerance
- > Shines in a high yield environment
- > Resistant to stem canker
- > Exciting total package bean

**A203E3**

Maturity: 2.0 RM

Trait: Enlist E3® Soybean Technology

Iron Chlorosis (IDC)	VG
SDS Tolerance	G
White Mold	G
Stress Tolerance	VG

- > Taller plant with very good standability
- > Resistant to brown stem rot and stem canker
- > Very good IDC tolerance
- > Awesome total package bean
- > Very good yield potential



No dicamba may be used in-crop with seed with Roundup Ready® Xtend Technology, unless and until approved or specifically permitted. No dicamba formulations have been registered for such in-crop use at the time this material was published. Please follow <https://www.roundupreadyxtend.com/pages/xtendimax-updates.aspx> for status updates.

**A1923XF**

Maturity: 1.9 RM

Trait: XtendFlex® Soybeans

Iron Deficiency Chlorosis	G
SDS Tolerance	G
White Mold	G
Stress Tolerance	VG

- > Broad spectrum performance
- > Excellent standability
- > Resistant to brown stem rot & stem canker
- > Excellent yield potential
- > Moves well north & south of zone



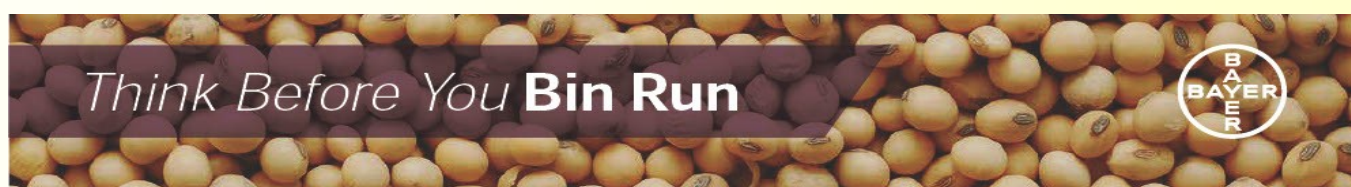
Brand	Trait	RM	HERBICIDE TOLERANCE	Plant Type	Flower	Pubesence	Pod	Hilum	Emergence	Standability	Sudden Death Syndrome	Soybean Cyst Nematode Source	Stress Tolerance	Phytopthora Gene	Iron Deficiency Chlorosis	Brown Stem Rot	White Mold
A154E3	E3	1.5	2,4-D RR, LL	M/B	Purple	Gray	Tan	Imp Black	VG	VG	G	Peking	VG	Rps1c3a	VG	R	G
A174E3	E3	1.7	2,4-D RR, LL	M/B	Purple	Gray	Tan	Imp Black	VG	VG	VG	PI88.788	G	Rps1c	G	R	G
A184E3	E3	1.8	2,4-D RR, LL	M/B	Purple	Gray	Tan	Buff	VG	VG	VG	Peking	VG	Rps 1K	VG	NG	VG
A1923XF	XF	1.9	Dicamba RR, LL	M/B	Purple	Lt Tawny	Tan	Black	VG	VG	G	PI88.788	VG	NG	G	R	G
A203E3	E3	2.0	2,4-D RR, LL	M/B	Purple	Gray	Brown	Buff	VG	VG	G	PI88.788	VG	Rps1a3a	VG	R	G

E= Excellent VG= Very Good G= Good A= Average n/a= Not enough information available NG= No Gene

MR= Moderately Resistant M/B= Moderately Bushy

E3= Enlist E3® Soybean Technology XF= XtendFlex® Soybeans

Herbicide Tolerances: RR= Glyphosate, LL= Glufosinate, 2,4,D= must use new formulations labeled for E3 beans Dicamba= Products include Xtendimax



## Think Before You Bin Run

**Verification Required** The last patent on the original Roundup Ready® soybean trait expired a few years ago and U.S. farmers may legally plant saved seed from some varieties of soybean containing the Roundup Ready® soybean trait. However, it is important that you check with your seed supplier to determine if a specific Roundup Ready® soybean variety is covered by other intellectual property rights, and if so, the policy for saving seed of that variety.

**Higher Seeding Rate** A higher seeding rate may be required for bin-run Roundup Ready® soybeans compared to new branded seed.

**Yield Loss** Roundup Ready 2 Yield® soybean, Roundup Ready 2 Xtend® soybean, and XtendFlex® soybean varieties typically have a higher yield opportunity than Roundup Ready® soybean varieties.

**Cleanout Loss** Loss of seed and/or shrink occurs during the seed cleaning and handling processes for bin-run seed.

**Seed Treatment Costs** Treating your seed will add costs—both the cost of the treatment and the application of that treatment.

**Lost Income** Every bushel of saved seed you plant is a bushel you're not selling as commodity grain.

**Increased Seed Management** If you plan to save and bin-run Roundup Ready® soybeans for planting, you will have to manage your harvest operations and grain storage so that the seed isn't co-mingled with other seed that's covered by intellectual property rights.

## High Value of New Branded Seed

### Latest Technology

- // High-yielding soybean technologies
- // Better variety options
- // Leading seed treatment options

### Customer Service

- // Dealer agronomic support before and after the sale
- // Replant policy support
- // Convenient packaging and delivery

### Reliable Germination and Quality

- // Rigorously tested and meets U.S. Federal Seed Act requirements
- // Free of seed-borne diseases
- // Properly stored and conditioned

For a list of Bayer's trait patents go to [cs.bayerpatents.bayer.com](http://cs.bayerpatents.bayer.com)

For questions regarding seed intellectual property, or to anonymously report a saved seed tip, you can contact Bayer in the following ways:

1. Call 1-866-99-BAYER
2. Send a letter: Trait Stewardship, 622 Emerson Road, Suite 150, Creve Coeur, MO 63141
3. Submit a contact request at [cropscience.bayer.us/contact](http://cropscience.bayer.us/contact) or scan the QR code



Bayer is a member of the Seed Innovation and Protection Alliance. Visit [www.seedipalliance.com](http://www.seedipalliance.com) to learn more. SIPA™ is a trademark of the Seed Innovation and Protection Alliance. Bayer is a member of Excellence Through Stewardship® (ETS). Bayer products are commercialized in accordance with ETS Product Launch Stewardship Guidance, and in compliance with Bayer's Policy for Commercialization of Biotechnology-Derived Plant Products in Commodity Crops. Commercialized products have been approved for import into key export markets with functioning regulatory systems. Any crop or material produced from this product can only be exported to, or used, processed or sold in countries where all necessary regulatory approvals have been granted. It is a violation of national and international law to move material containing locked traits across boundaries into nations where import is not permitted. Growers should talk to their grain handler or product purchaser to confirm their buying position for this product. Excellence Through Stewardship® is a registered trademark of Excellence Through Stewardship. ALWAYS READ AND FOLLOW PESTICIDE LABEL DIRECTIONS. It is a violation of federal and state law to use any pesticide product other than in accordance with its labeling. NOT ALL formulations of dicamba or glufosinate are approved for in-crop use with Roundup Ready 2 Xtend® soybeans. NOT ALL formulations of dicamba, glufosinate or glufosinate are approved for in-crop use with products with XtendFlex® Technology. ONLY USE FORMULATIONS THAT ARE SPECIFICALLY LABELED FOR SUCH USES AND APPROVED FOR SUCH USE IN THE STATE OF APPLICATION. Contact the U.S. EPA and your state pesticide regulatory agency with any questions about the approval status of dicamba herbicide products for in-crop use with Roundup Ready 2 Xtend® soybeans or products with XtendFlex® Technology. Roundup Ready® Technology contains genes that confer tolerance to glyphosate. Roundup Ready 2 Xtend® Technology contains genes that confer tolerance to glyphosate. Roundup Ready 2 Xtend® soybeans contain genes that confer tolerance to glyphosate and dicamba. Products with XtendFlex® Technology contain genes that confer tolerance to glyphosate, glufosinate and dicamba. Glufosinate will kill all crops that are not tolerant to glufosinate. Dicamba will kill all crops that are not tolerant to dicamba. Glufosinate will kill all crops that are not tolerant to glufosinate. Contact your seed brand dealer or refer to the Bayer Technology Use Guide for recommended weed control programs. Contact your Bayer dealer, refer to the Bayer Technology Use Guide, or call the technical support line at 1-888-383-6847 for recommended Roundup Ready® Xtend Crop System weed control programs. Bayer, Bayer Cross, Roundup Ready 2 Xtend®, Roundup Ready 2 Yield®, Roundup Ready®, and XtendFlex® are registered trademarks of Bayer Group. LibertyLink® and the Water Droplet Design® is a trademark of BASF Corporation. ©2022 Bayer Group. All rights reserved.

RM 01/2022

## THE NEW STANDARD FOR WEED CONTROL

### ENLIST® WEED CONTROL SYSTEM



**ON-TARGET APPLICATIONS:** | 90% less drift than traditional 2,4-D | 96% less volatile than 2,4-D ester



Following burndown, Enlist Duo® and Enlist One® herbicides with Colex-D® technology are the only herbicides containing 2,4-D that are labeled for preemergence and postemergence use with Enlist E3® soybeans.

| 2,4-D choline | Glyphosate | Glufosinate

- Convenient proprietary blend of 2,4-D choline and glyphosate
- The two modes of action work together to deliver control of yield-robbing weeds and help prevent resistance

- Straight goods 2,4-D choline with additional tank-mix flexibility
- Provides additional tank-mix flexibility with glyphosate, glufosinate and other qualified tank-mix products, allowing for a customized weed control program to fit each farm



Seeds containing the PowerCore® Enlist®, PowerCore® Enlist® Refuge Advanced®, Enlist® Corn - REFUGE and Enlist E3® traits are protected under one or more U.S. patents which can be found at [www.traitstewardship.com](http://www.traitstewardship.com). The purchase of this traited seed includes a limited license to produce a single crop in the United States. The use of seed from such a crop and/or the progeny thereof for propagation or seed multiplication or for production or development of a hybrid or different variety of seed is strictly prohibited. You acknowledge and agree to be bound by the terms and conditions of the following documents in effect at the time of planting of this seed: (i) the Corteva Agriscience Technology Use Agreement and (ii) the Product Use Guides for all technologies in this seed, including the Herbicide Resistance Management (HRM), and Use requirements. To plant PowerCore Enlist, PowerCore Enlist Refuge Advanced, Enlist Corn - REFUGE and Enlist E3 seed, you must have a limited license from Corteva Agriscience (or other appropriate affiliates). In consideration of the foregoing, Corteva Agriscience grants to the Grower a limited license to use its technology to produce only a single commercial crop in the United States under the terms and conditions set forth in the Technology Use Agreement in effect at the time of planting of this seed.

Enlist E3® soybean seeds containing the Enlist® trait can only be used to plant a single commercial crop. It is unlawful to save and replant Enlist E3 soybeans. Additional information and limitations on the use of these products are provided in the Corteva Agriscience Technology Use Agreement and Enlist® Soybean Product Use Guide. U.S. patents for Corteva Agriscience technologies can be found at [www.corteva.us/Resources/trait-stewardship.html](http://www.corteva.us/Resources/trait-stewardship.html).

Corteva Agriscience is a member of Excellence Through Stewardship® (ETS). Corteva Agriscience products are commercialized in accordance with ETS Product Launch Stewardship Guidance and in compliance with the Corteva Agriscience policies regarding stewardship of those products. In line with these guidelines,

our product launch process for responsible launches of new products includes a longstanding process to evaluate export market information, value chain consultations, and regulatory functionality. Growers and end-users must take all steps within their control to follow appropriate stewardship requirements and confirm their buyer's acceptance of the grain or other material being purchased. For more detailed information on the status of a trait or stack, please visit [www.biotradestatus.com](http://www.biotradestatus.com). Excellence Through Stewardship® is a registered trademark of Global Stewardship Group.

**IRM** - Properly managing trait technology is key to preserving it as a long term crop protection tool. **Growers who fail to comply with IRM requirements risk losing access to this product.** To help preserve the effectiveness of *B.t.* corn technologies, growers planting *B.t.* corn technologies are required to follow an IRM Plan. Consult the Corn Product Use Guide for appropriate refuge configuration options. Before opening a bag of seed, be sure to read, understand and accept the stewardship requirements, including applicable refuge requirements for insect resistance management, for the biotechnology traits expressed in the seed as set forth in the Technology Use Agreement and Product Use Guide. By opening and using a bag of seed, you are reaffirming your obligation to comply with the most recent stewardship requirements.

For complete details on IRM requirements for hybrids with *Bt* technology, including refuge examples and important information on the use of insecticides on refuge and *Bt* corn acres, please consult appropriate Product Use Guide. Go to [www.corteva.us/Resources/trait-stewardship.html](http://www.corteva.us/Resources/trait-stewardship.html) to download the latest Corteva Agriscience Corn Product Use Guide.

Following burndown, Enlist Duo® and Enlist One® herbicides with Colex-D® technology are the only herbicides containing 2,4-D that are authorized for preemergence and postemergence use with Enlist® crops. Consult Enlist® herbicide labels for weed species controlled. Enlist Duo and Enlist One herbicides are not registered for use or sale in all states and counties; are not registered in AK, CA, CT, HI, ID, MA, ME, MT, NH, NV, OR, RI, UT, VT, WA and WY; and have additional subcounty restrictions in AL, GA, TN and TX, while existing county restrictions still remain in FL. All users must check "Bulletins Live! Two" no earlier than six months before using Enlist One or Enlist Duo. To obtain "Bulletins," consult [epa.gov/espp/](http://epa.gov/espp/), call 1-844-447-3813, or email [ESPP@epa.gov](mailto:ESPP@epa.gov). You must use the "Bulletin" valid for the month and state and county in which Enlist One or Enlist Duo are being applied. Contact your state pesticide regulatory agency if you have questions about the registration status of Enlist® herbicides in your area. ALWAYS READ AND FOLLOW PESTICIDE LABEL DIRECTIONS. IT IS A VIOLATION OF FEDERAL AND STATE LAW TO USE ANY PESTICIDE PRODUCT OTHER THAN IN ACCORDANCE WITH ITS LABELING. ONLY USE FORMULATIONS THAT ARE SPECIFICALLY LABELED FOR SUCH USE IN THE STATE OF APPLICATION. USE OF PESTICIDE PRODUCTS, INCLUDING, WITHOUT LIMITATION, 2,4-D-CONTAINING PRODUCTS NOT AUTHORIZED FOR USE WITH ENLIST CORN AND SOYBEANS, MAY RESULT IN OFF-TARGET DAMAGE TO SENSITIVE CROPS/AREAS AND/OR SUSCEPTIBLE PLANTS, IN ADDITION TO CIVIL AND/OR CRIMINAL PENALTIES. Additional product-specific stewardship requirements for Enlist crops, including the Enlist Product Use Guide, can be found at [www.traitstewardship.com](http://www.traitstewardship.com). POWERCORE® multi-event technology developed by Corteva Agriscience LLC and Monsanto. LibertyLink® and the Water Droplet Design are registered trademarks of BASF. PowerCore® and Roundup Ready® are registered trademarks of Bayer Group. Always follow IRM, grain marketing and all other stewardship practices and pesticide label directions. *B.t.* products may not yet be registered in all states. Check with your seed representative for the registration status in your state. The transgenic soybean event in Enlist E3® soybeans is jointly developed and owned by Corteva Agriscience and M.S. Technologies, L.L.C.™® Trademarks of Corteva Agriscience and its affiliated companies.



**No dicamba may be used in-crop with seed with Roundup Ready® Xtend Technology, unless and until approved or specifically permitted, and no dicamba formulations are currently registered for such use in the 2025 season. Please follow [www.roundupreadyxtend.com/pages/xtendimax-updates.aspx](http://www.roundupreadyxtend.com/pages/xtendimax-updates.aspx) for status updates. Dicamba may harm crops that are not tolerant to dicamba.**

Bayer is a member of Excellence Through Stewardship® (ETS). Bayer products are commercialized in accordance with ETS Product Launch Stewardship Guidance, and in compliance with Bayer's Policy for Commercialization of Biotechnology-Derived Plant Products in Commodity Crops. Commercialized products have been approved for import into key export markets with functioning regulatory systems. Any crop or material produced from this product can only be exported to, or used, processed or sold in countries where all applicable regulatory approvals have been granted. It is a violation of national and international law to move material containing biotech traits across boundaries into nations where import is not permitted. Growers should talk to their grain handler or product purchaser to confirm their buying position for this product. Excellence Through Stewardship® is a registered trademark of Excellence Through Stewardship.

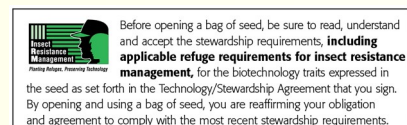
ALWAYS READ AND FOLLOW PESTICIDE LABEL DIRECTIONS. It is a violation of federal and state law to use any pesticide product other than in accordance with its labeling. NOT ALL formulations of dicamba or glyphosate are approved for in-crop use with Roundup Ready 2 Xtend® soybeans. NOT ALL formulations of dicamba, glyphosate or glufosinate are approved for in-crop use with products with XtendFlex® Technology. ONLY USE FORMULATIONS THAT ARE SPECIFICALLY LABELED FOR SUCH USES AND APPROVED FOR SUCH USE IN THE STATE OF APPLICATION. Contact the U.S. EPA and your state pesticide regulatory agency with any questions about the approval status of dicamba herbicide products for in-crop use with products with XtendFlex® Technology.

*B.t.* products may not yet be registered in all states. Check with your seed brand representative for the registration status in your state.

Refuge seed may not always contain the DroughtGard® trait. IMPORTANT IRM INFORMATION: Certain products are sold as RIB Complete® corn blend products, and do not require the planting of a structured refuge except in the Cotton-Growing Area where corn earworm is a significant pest. Products sold without refuge in the bag (non-RIB Complete) require the planting of a structured refuge. See the IRM/Grower Guide for additional information. Always read and follow IRM requirements.

Roundup Ready® Technology contains genes that confer tolerance to glyphosate. Roundup Ready® 2 Technology contains genes that confer tolerance to glyphosate. Roundup Ready 2 Xtend® soybeans contain genes that confer tolerance to glyphosate and dicamba. Products with XtendFlex® Technology contains genes that confer tolerance to glyphosate, glufosinate and dicamba. Plants that are not tolerant to glyphosate may be damaged or killed if exposed to those herbicides. Plants that are not tolerant to glyphosate, dicamba, and/or glufosinate may be damaged or killed if exposed to those herbicides. Plants that are not tolerant to dicamba may be damaged or killed if exposed to those herbicides. Contact your seed brand dealer or refer to the Bayer Technology Use Guide for recommended weed control programs. Insect control technology provided by Vip3A is utilized under license from Syngenta Crop Protection AG. Herculex® is a registered trademark of Dow AgroSciences LLC. Agrisure Viptera® is a registered trademark of a Syngenta group company. LibertyLink logo® and LibertyLink® are trademarks of BASF Corporation. Respect the Refuge and Corn Design® and Respect the Refuge® are registered trademarks of National Corn Growers Association. Acceleron®, DroughtGard®, RIB Complete®, Roundup Ready 2 Technology and Design®, Roundup Ready 2 Xtend®, Roundup Ready 2 Yield®, Roundup Ready®, SmartStax®, Trecepta®, VT Double PRO®, VT4PRO™ and XtendFlex® are trademarks of Bayer Group.

Seed containing a patented trait can only be used to plant a single commercial crop. It is unlawful to save and replant Roundup Ready 2 Yield® soybeans, Roundup Ready 2 Xtend® soybeans, and XtendFlex® soybeans. Additional information and limitations on the use of these products are provided in the Technology Stewardship Agreement and the Bayer Technology Use Guide: [tug.bayer.com](http://tug.bayer.com). U.S. patents for Bayer technologies can be found at the following webpage: [cs.bayerpatents.bayer.com](http://cs.bayerpatents.bayer.com)





## Seed Licensing Made Easy

AgCelerate is the most effective and secure way to maintain compliance for your seed licensing. Register for free, then start signing seed agreements for multiple manufacturers with only a few clicks of the mouse!

.....

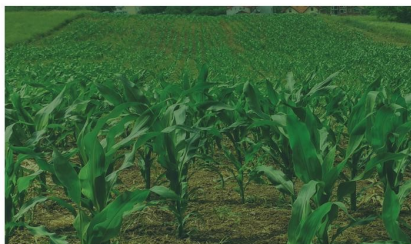
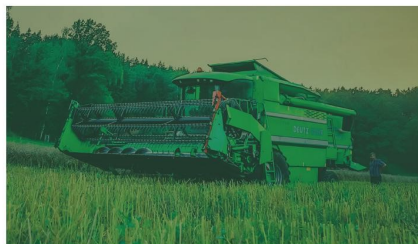
**Step 1:** Go to [www.agcelerate.com](http://www.agcelerate.com) and click the big "Growers Click Here to Register" button

**Step 2:** Complete registration. It's free and only takes a minute or two!

**Step 3:** Sign agreements and get instant access† to your license numbers!

*Benefits of registering for AgCelerate and signing your agreements electronically:*

- Sign agreements for all your providers\* on a single website.
- Less paperwork so you can focus on farming
- Faster Processing so you can get your license numbers faster
- Easily consolidate all your licenses in one easy-to-access location
- Completely free to use for growers!



†Not all trait providers provide instant license numbers; some providers may take up to 72 hours.

\*Some providers and agreements may not be available on AgCelerate.

## SD Buffalo Oats

- > Highest top-end yield potential
- > Similar maturity to Rushmore
- > Med.tall plant with excellent standability
- > Excellent crown resistance
- > Great total package option
- > Released by South Dakota
- > Recommended seeding rate: 90-120#/ acre



## MN Torgy Hard Red Spring Wheat

- > Top yielding variety
- > Medium short straw, good straw strength
- > Good test weight
- > Good disease resistance
- > Medium maturity
- > Released by U of M
- > Recommended seeding rate: 90-120#/ acre

## 4- Way Grass Mix

*30% Smooth Brome, 30% Low Endophyte Tall Fescue, 30% Perennial Ryegrass, 10% Climax Timothy*

- > All purpose, all grass mix
- > Adaptable to many soil types
- > Varieties not stated
- > Recommended solid seeding rate: 25#/ acre
- > Ask for companion recommendations

## Northern Best Brand II Alfalfa

- > A mix of high quality and high yielding varieties
- > Superior performance for hay or silage
- > Dependable winter hardy alfalfa
- > Resistant to bacterial wilt, common leaf spot, fusarium, & phytophthora root rot
- > A blend of high quality, high yielding varieties, all varieties are VNS
- > Recommended solid seeding rate: 12-18#/ acre
- > Ask for companion recommendations

## Vernal Alfalfa

- > Uniquely winter hardy
- > Very high yield potential
- > Fast recovery and can tolerate frequent cutting
- > Fine stemmed with dark green leaves
- > Limited disease resistance
- > Released by Wisconsin in 1953
- > Recommended solid seeding rate: 12-18#/ acre
- > Ask for companion recommendations

## Grass & Other Seed Needs

We have gone away from keeping Orchard and Brome on hand, 4 way mix is grass we will have on hand.

Please call ahead and order grasses if you know you will need them.

If there is something you need but you do not see listed in our catalog give us a call @ 507-246-5032 and we will do our best to get it in for you



## Meet the Team



**Peter  
Anderson**  
Co-Owner



**Neal  
Anderson**  
Co-Owner



**Kelsey  
Henke**



**Jacob  
Anderson**

### 2026 Product Price Guide

Product		Trait Code	Seed Size	Unit Size	Price/ Unit
Conventional Corn		-	MF/ MR	80M	Call for Pricing
Roundup Ready® Corn 2		R	MF/ MR	80M	
Trecepta® RIB Complete®		TRE	MF/ MR	80M	
PowerCore® Enlist® Refuge Advanced®		PCE	MF/MR	80M	
SmartStax® RIB Complete® Corn Blend		SRC	MF/MR	80M	
SmartStax® PRO RIB Complete®		SSP	MF/MR	80M	
Enlist E3® Soybean Technology		E3	<>	140M	
XtendFlex® Soybeans		XF	<>	140M	
Alfalfa	Vernal	<>	<>	50#	
	Northern Best	<>	<>	50#	
Oats	SD Buffalo	NEW PACKAGING SIZE!		50#	Call for Pricing
Wheat	MN Torgy	<>	<>	50#	
4 way Grass Mix (30% Brome, 30% Tall Fescue,		<>	<>	25#	

ORDERS ACCEPTED ANYTIME- Please call 507-246-5032 to place an order.

**All Prices are subject to change without notice.**

Prepay is welcome, invoice due at time of pickup.

All prices are set to be fair to all customers.

Results may vary

**Are you licensed?** If you purchase anything traited from us, you are required to sign a license with the appropriate company to be compliant with your traited seed purchase. AgCelerate makes this an easy process, as you can sign all necessary licenses in one process. To be compliant for the traited products we sell, we recommend a Bayer Technology Stewardship Agreement (TSA) and a Corteva Technology Use Agreement. Please feel free to call our office if you need any help or a paper copy.

**\*\*REQUIRED:** Bayer has requested that ALL GROWERS resign their license agreements to stay current. The fastest, most efficient way to do this is via <https://agcelerate.com/>. This website makes resigning your agreement a very quick process. If you need assistance please give us a call or check out their "Support and FAQs" tab for a user guide. You will need to have an email to create an account. If you already have an account, please sign in and re-sign your licenses. There will be a limited number of paper agreements available.

**Contact us @ 507-246-5032 to place your order today!**

**All prices are subject to change without notice.**

We like to be fair to all of our customers and we care not to hassle you with games.





# Anderson Seeds

Of St. Peter, MN

37825 County Road 63 St. Peter, MN 56082



**Contact us today at 507-246-5032**

**Check out our website [andersonseedsmn.com](http://andersonseedsmn.com)**